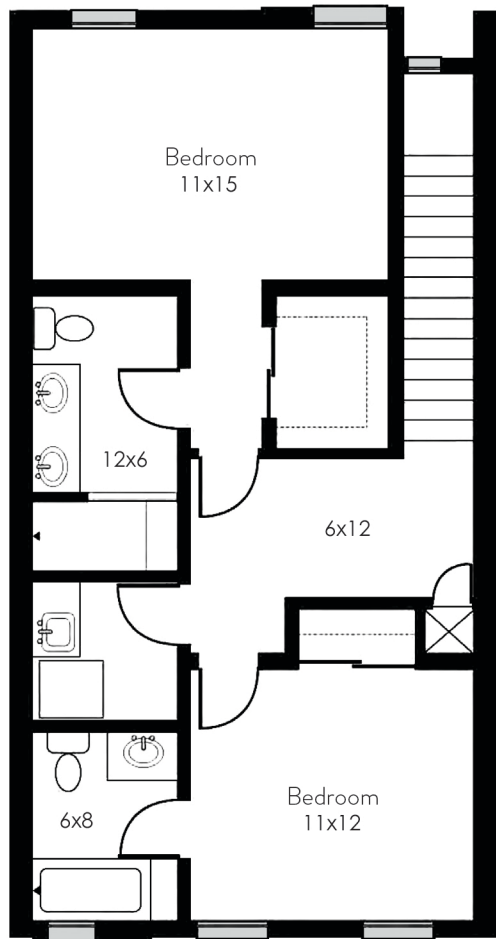
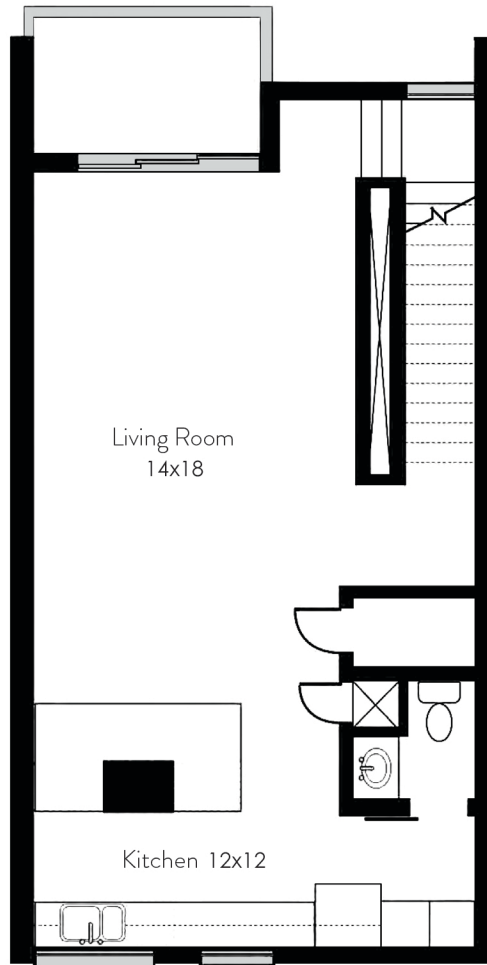


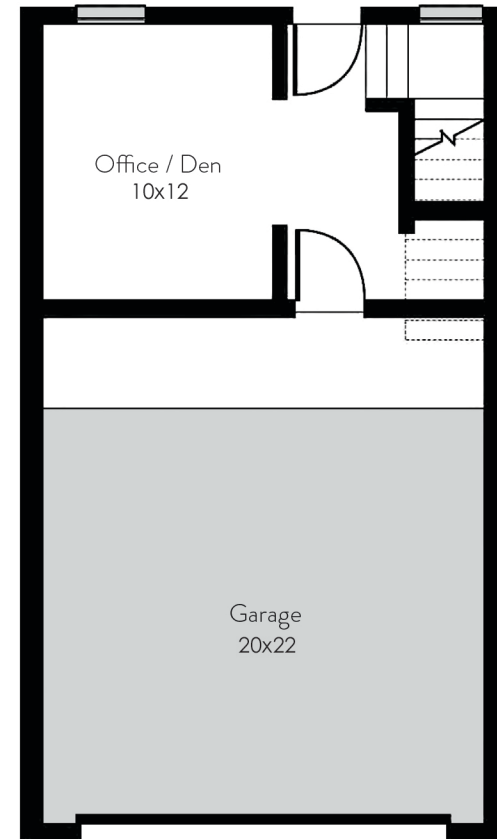
**MIDTOWN** – 2 bedroom, 2.5 bathroom, 1730sf +/-, 3 levels, 2 car garage



**Level 3**



**Level 2**



**Level 1**

**CORONADO COMMONS**

325 E CORONADO RD PHOENIX 85004

CoronadoCommonsLiving.com

**ON-SITE SALES**

Joel Starkman 602.793.8139

**LAUNCH**  
REAL ESTATE

All architectural, plans, renderings and illustrations reflect an artistic interpretation of the actual project and may differ from actual built environment. Materials and sizes are for comparison only. Square footage is approximate. In a continuing effort to meet changing conditions, Developer retains the right to delete, modify, change or substitute materials, design and features. The features, amenities and future residential and retail buildings depicted or otherwise described, and their location and configuration, are conceptual based on proposed plans, no guarantees are provided that such items will be built, or if built will be in the same location or configuration, or will be of the same type, size, or nature as depicted or described. Brokers welcome. Prices, terms, incentives, materials and availability are subject to change without notice. All map locations are approximate.

